



107mm² Copper Tin Contact Wire



Eland Product Group: **91**

APPLICATION

Copper tin contact wire provides direct contact to pantograph transmitting power from the overhead line system to the locomotive. The copper tin contact wire will be suspended from catenary wires via drop wires.

CABLE THIRD-PARTY ACCREDITATION



Network Rail (NR) certified and PADS listed as meeting the requirements for installation on their network

Network Rail Certificate of Acceptance

CONSTRUCTION

Drawing Number

1/148/438/A3

Material

Copper tin (CuSn-0.4%)

STANDARDS

BS EN 50149 to AC-107

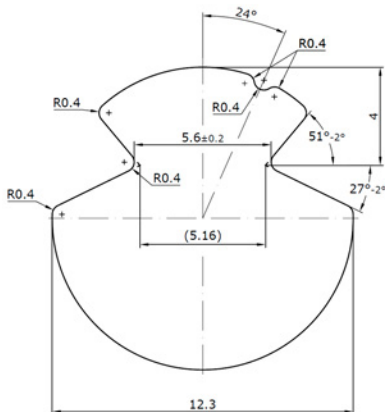
THE CABLE LAB[®]

AN ISO/IEC 17025 AND IECEE CBTL ACCREDITED FACILITY

Our world-class testing facility assures the quality and compliance of this cable through a continuous and rigorous testing regime.



DIMENSIONS



SUSTAINABILITY COMMITMENT

We are on a journey to Net Zero.

We've committed to near-term emissions reductions and a net-zero target with the Science Based Targets initiative and we're a signatory to the United Nations Global Compact Sustainable Development Goals.

Learn more about embodied carbon and our carbon emissions reduction actions, our comprehensive recycling services, and wider ESG activities for sustainable operations at: www.elandcables.com/company/about-us/esg-sustainability



SCIENCE
BASED
TARGETS

**BUSINESS
AMBITION FOR 1.5°C**



REGULATORY COMPLIANCE

This cable meets the requirements of the RoHS Directive 2015/65/EU and Reach Directive EC 1907/2006. RoHS compliance has been tested and confirmed by The Cable Lab[®].



| NETWORK RAIL PART NO. / PADS | ELAND PART NO. | NOMINAL CROSS SECTIONAL AREA mm ² | MINIMUM TENSILE STRENGTH R _M N/mm ² | MINIMUM BREAKING LOAD F _M kN | MINIMUM ELONGATION AT BREAK A ₂₀₀ % | MINIMUM ELECTRICAL CONDUCTIVITY AT 20°C m/ohms/mm ² | MINIMUM ELECTRICAL CONDUCTIVITY AT 20°C % IACS | MAXIMUM ELECTRICAL RESISTANCE R ohms/km | NOMINAL WEIGHT kg/km |
|------------------------------|----------------|--|---|---|--|--|--|---|----------------------|
| 0091/012326 | 91/012326 | 107 | 430 | 44.6 | 3 | 46.4 | 80 | 0.2076 | 952 |

The information contained within this datasheet is for guidance only and is subject to change without notice or liability. All the information is provided in good faith and is believed to be correct at the time of publication. When selecting cable accessories, please note that actual cable dimensions may vary due to manufacturing tolerances.