

Transformer Terminals 4 Hole Fixing



Eland Product Group: **FCA**

APPLICATION

The transformer terminal four hole fixing, also known as a four hole crimp lug, connects to the four fixing studs on transformer fixing points to give the best surface contact possible. FT70 to FT300 are brazed palm type. FT400 to FT1000 are formed from 1 single tube.

STANDARDS

BS 4579

THE CABLE LAB[®]

AN ISO/IEC 17025 AND IECEE CBTL ACCREDITED FACILITY

Our world-class testing facility assures the quality and compliance of this cable through a continuous and rigorous testing regime.



SUSTAINABILITY COMMITMENT

We are on a journey to Net Zero.

We've committed to near-term emissions reductions and a net-zero target with the Science Based Targets initiative and we're a signatory to the United Nations Global Compact Sustainable Development Goals.

Learn more about embodied carbon and our carbon emissions reduction actions, our comprehensive recycling services, and wider ESG activities for sustainable operations at: www.elandcables.com/company/about-us/esg-sustainability



REGULATORY COMPLIANCE

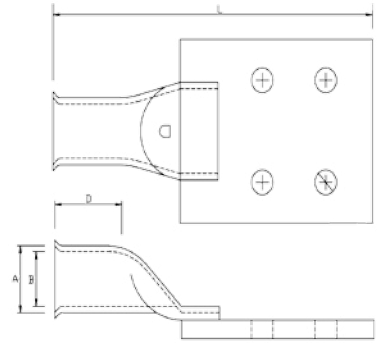
This cable meets the requirements of the RoHS Directive 2015/65/EU and Reach Directive EC 1907/2006. RoHS compliance has been tested and confirmed by The Cable Lab[®].



DIMENSIONS

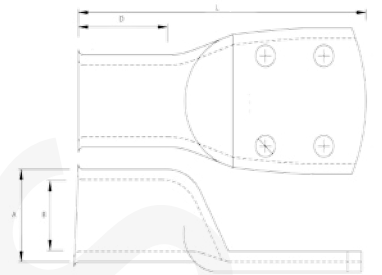
Brazen Palm 4 Hole Terminals

ELAND PART NO.	TOTAL WIDTH A mm	ENTRY WIDTH B mm	ENTRY DEPTH D mm	TOTAL LENGTH L mm
FT70-8	15	11.5	18	106
FT95-8	17	13.5	24	112
FT120-8	19	15.0	27	116
FT150-8	21	16.5	27	121
FT185-8	23	18.5	30	125
FT240-8	26	21.0	32	127
FT300-8	28	23.0	37	135



Formed 4 Hole Terminals

ELAND PART NO.	TOTAL WIDTH A mm	ENTRY WIDTH B mm	ENTRY DEPTH D mm	TOTAL LENGTH L mm
FT400-8	36	27.0	38	123
FT500-8	38	30.0	60	149
FT630-8	44	34.0	65	152
FT800-8	49	38.2	56	164
FT1000-8	53	42.5	57.5	173



The information contained within this datasheet is for guidance only and is subject to change without notice or liability. All the information is provided in good faith and is believed to be correct at the time of publication. When selecting cable accessories, please note that actual cable dimensions may vary due to manufacturing tolerances.